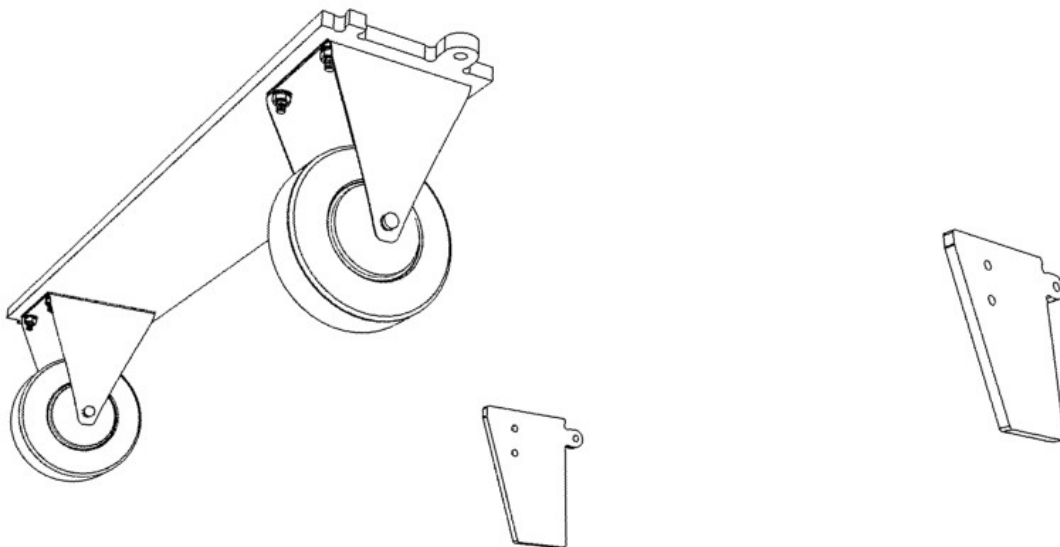




HOW TO ASSEMBLE, USE AND CARE FOR YOUR Wheel Set



RECYCLED & RECYCLABLE

Products from green frog designs are made, wherever possible, from materials that are recycled. Where this is not practical, we always try to use materials that are suitable for recycling.

Our plastic is made from recycled waste plastic, predominantly plastic wrapping and carrier bags. By choosing our products, rather than those made from virgin plastic, you are helping to restrict the amount of new plastic being made. We recycle all our waste plastic and, of course, our products themselves can be recycled (if they ever wear out!!).

The recycled plastic we use is incredibly tough, but is as easily worked as wood. There is no need for preservative treatment with insecticides or fungicides, and structures won't splinter or crack, so they retain their structural integrity well. The plastic is resistant to UV light, so it retains its colour well, and is pretty much impervious to atmospheric pollutants and seasonal climatic actions such as freeze-thaw. It insulates quite well, and is also resistant to chewing. These properties mean that it retains its appearance, colour and functionality for much longer than timber.

The sheets of recycled plastic have a very uniform thickness, and so are ideally suited to our high-technology manufacturing process, which uses computer-controlled machines to cut shapes to accuracies better than 0.1mm.

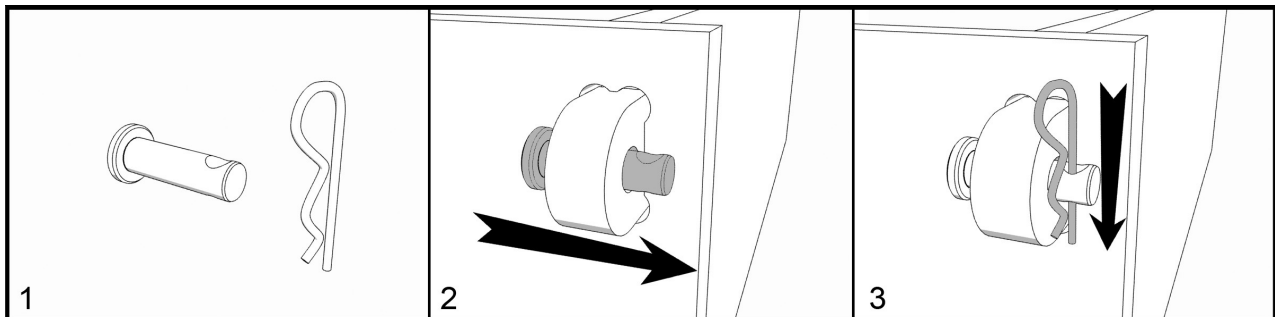
We also use some metal components to fix parts together. The metals used are either stainless steel or other rust-resistant alloy, so they have a very long lifetime. They are also suitable for recycling.

Our packaging and literature is all made from recycled materials wherever possible. For example, assembly instructions are printed on recycled paper, and we use recycled plastic bubble-wrap in our packaging. Even our business cards are made from 80% recycled card.

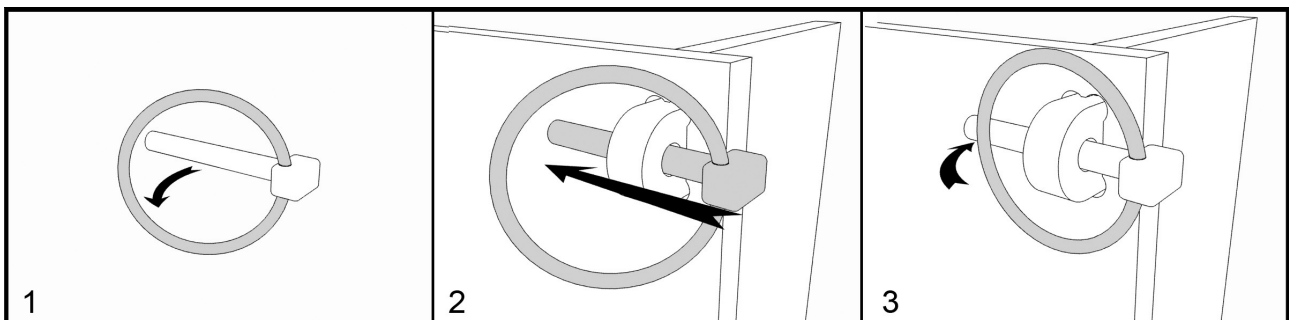
In other words: **Fun, functional products that don't cost the Earth!**



HOW TO FIT A CLEVIS PIN (IF USED)

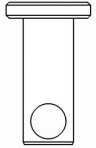
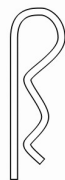
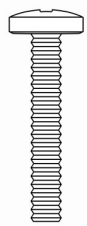

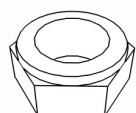
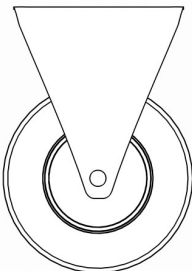

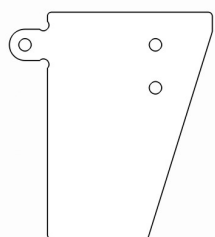
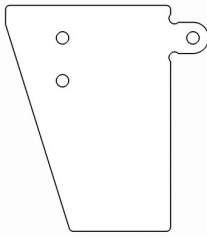


HOW TO FIT A LINCH PIN (IF USED)



You only need to move the ring slightly away from the bar. They are designed to spring closed, so watch your fingers!

PARTS (Not to scale)

				
4x Medium Clevis Pin	4x Retaining clip	12x M6x30mm Screw	12x Standard Washer	12x Nylock Nut
				
2x Wheel	1x Wheel Bar	1x Left Leg Extension	1x Right Leg Extension	

TOOLS REQUIRED

Sharp knife (e.g. Stanley Knife) or Sand Paper
 Large size cross head screwdriver
 10mm ring spanner (or socket wrench or adjustable spanner)
 Small flat-bladed screwdriver (optional)

PRE-ASSEMBLY CHECKS

Prior to assembly, check that you have all the required parts. Please be aware that, being a recycled material, some minor surface blemishes or defects may have occurred during manufacture. These will not affect the functionality of your product.

Trim any excess plastic using sand paper or a sharp knife. **[NOTE: Be careful to cut away from yourself.]**

If any parts are missing, please email sales@greenfrogdesigns.co.uk
 Please state the part number, quantity missing, your phone number and your full postal address.

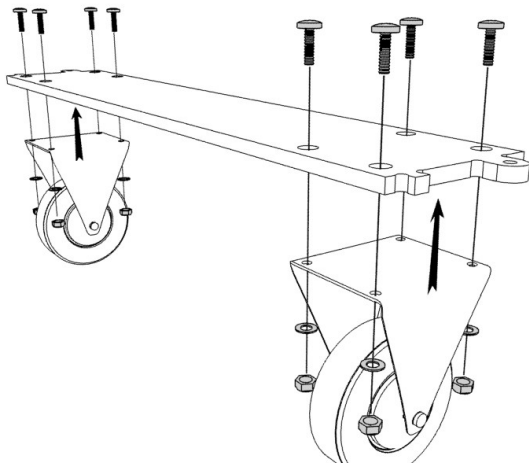
SPARE PARTS

Spare parts are available to order online via our website: www.greenfrogdesigns.co.uk

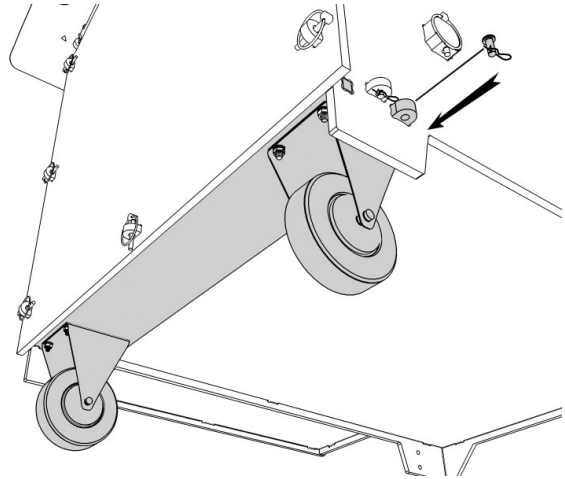
NOTE:

The **Wheel Set** is not compatible with the **Run**, and cannot be used in conjunction with it. The **Wheel Set** can be used with the **Leg Set**, if required, but the **Chicken House** must be taken off the **Leg Set** before the **Wheel Set** can be used.

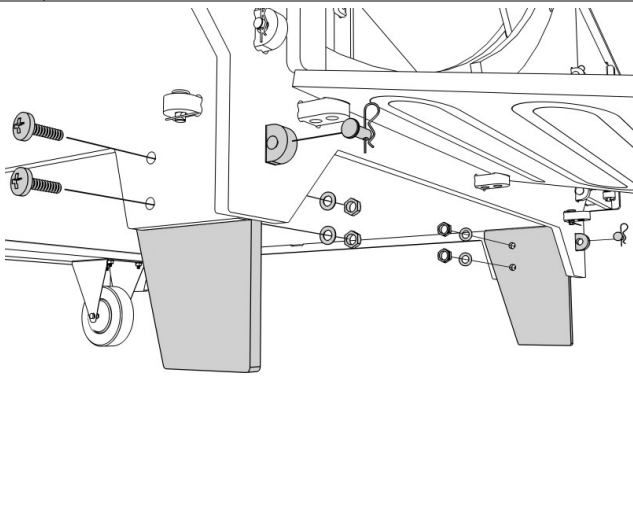
HOW TO ASSEMBLE



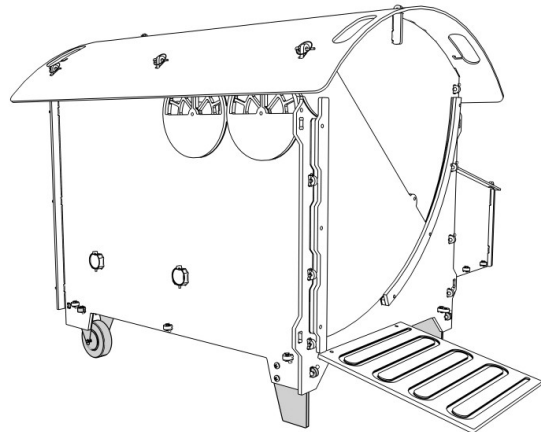
1 The **Wheel Bar** is assembled by fixing the **Wheel** housings to the **Wheel Bar** using **30mm Screws, Standard Washers** and **Nylock Nuts**. The screw heads should fit into the recesses in the bar, so that they do not protrude above the bar top face.



2 The **Wheel Bar** fits into the holes in the **Side Walls**, and is held in position by **Medium Clevis Pins** and **R-Clips**. You will need to remove the **Back Door** and undo the rear of one of the **Side Walls** to allow fitting.



3 Fit the front **Leg Extensions** to the **Front Wall** using **Medium Clevis Pins** and **R-Clips**. Then secure them firmly to the **Side Walls** using **30mm Screws, Standard Washers** and **Nylock Nuts**.



4 The **Wheel Set** allows the **Chicken House** to be moved around easily by one person, lifting at the front.