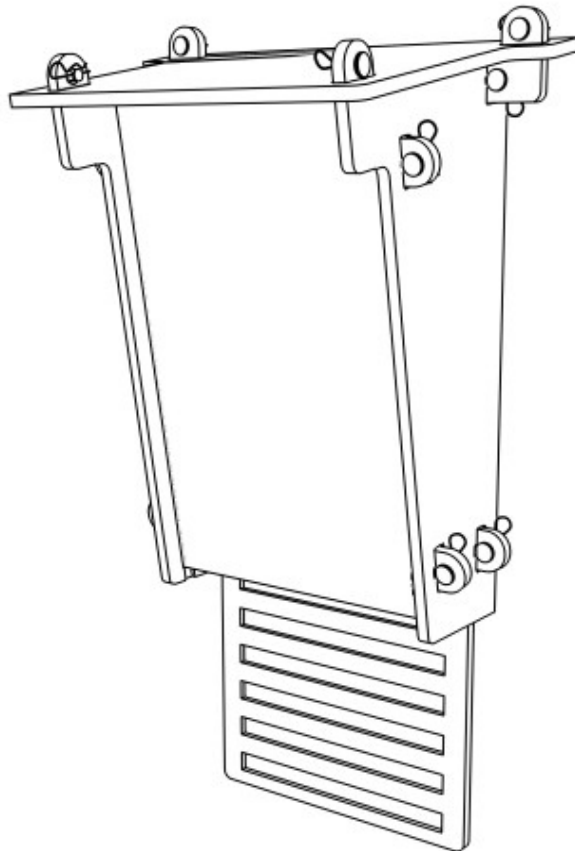




HOW TO ASSEMBLE, USE AND CARE FOR YOUR **BAT BOX**



RECYCLED & RECYCLABLE

Products from green frog designs are made, wherever possible, from materials that are recycled. Where this is not practical, we always try to use materials that are suitable for recycling.

Our plastic is made from recycled waste plastic, predominantly plastic wrapping and carrier bags. By choosing our products, rather than those made from virgin plastic, you are helping to restrict the amount of new plastic being made. We recycle all our waste plastic and, of course, our products themselves can be recycled (if they ever wear out!!).

The recycled plastic we use is incredibly tough, but is as easily worked as wood. There is no need for preservative treatment with insecticides or fungicides, and structures won't splinter or crack, so they retain their structural integrity well. The plastic is resistant to UV light, so it retains its colour well, and is pretty much impervious to atmospheric pollutants and seasonal climatic actions such as freeze-thaw. It insulates quite well, and is also resistant to chewing. These properties mean that it retains its appearance, colour and functionality for much longer than timber.

The sheets of recycled plastic have a very uniform thickness, and so are ideally suited to our high-technology manufacturing process, which uses computer-controlled machines to cut shapes to accuracies better than 0.1mm.

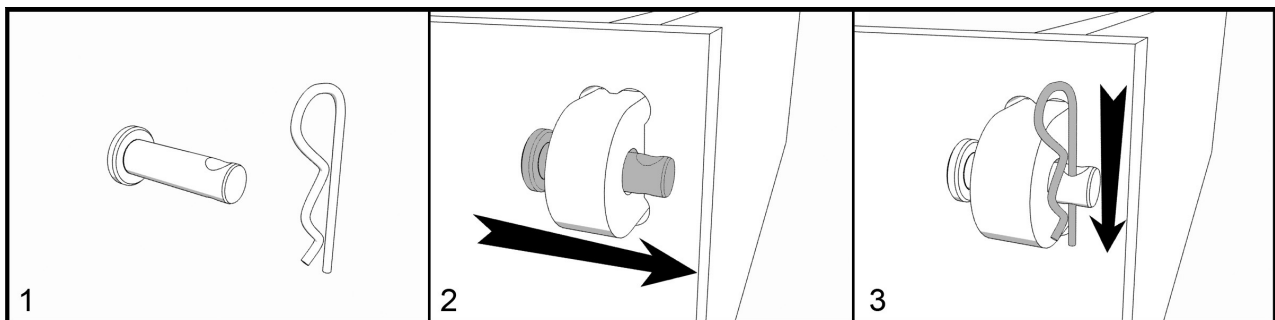
We also use some metal components to fix parts together. The metals used are either stainless steel or other rust-resistant alloy, so they have a very long lifetime. They are also suitable for recycling.

Our packaging and literature is all made from recycled materials wherever possible. For example, assembly instructions are printed on recycled paper, and we use recycled plastic bubble-wrap in our packaging. Even our business cards are made from 80% recycled card.

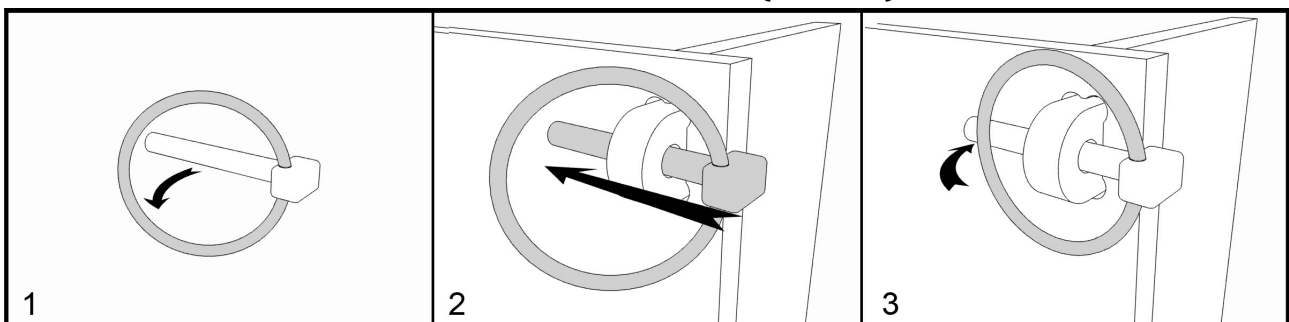
In other words: **Fun, functional products that don't cost the Earth!**



HOW TO FIT A CLEVIS PIN (IF USED)

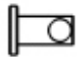

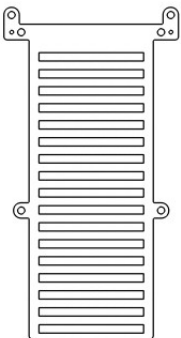
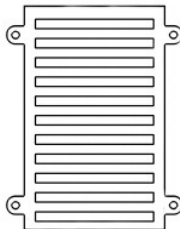






HOW TO FIT A LINCH PIN (IF USED)



Linch Pins are designed to spring closed, so watch your fingers!

PARTS

				
12x Short Clevis Pin	12x R-Clip	1x Back Panel	1x Front Panel	1x Roof
				
1x Right Side Panel	1x Left Side Panel	2x Steel Screw		

DIMENSIONS

Dimensions: 23 [w] x 39 [h] x 14 [d] cm

TOOLS REQUIRED

Sharp knife (e.g. Stanley Knife) or Sand Paper
Medium size cross head screwdriver

PRE-ASSEMBLY CHECKS

Prior to assembly, check that you have all the required parts. Please be aware that, being a recycled material, some minor surface blemishes or defects may have occurred during manufacture. These will not affect the functionality of your product.

Trim any excess plastic using sand paper or a sharp knife. **[NOTE: Be careful to cut away from yourself.]**

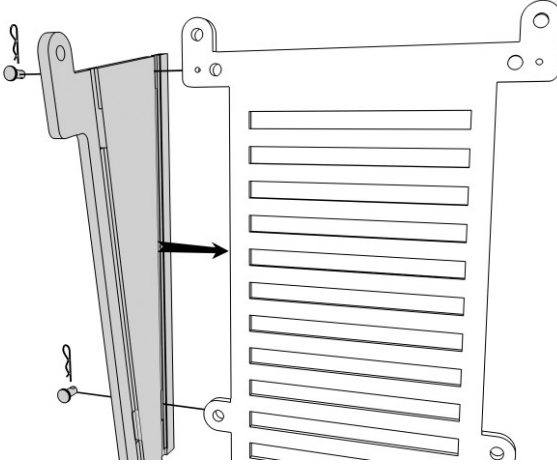
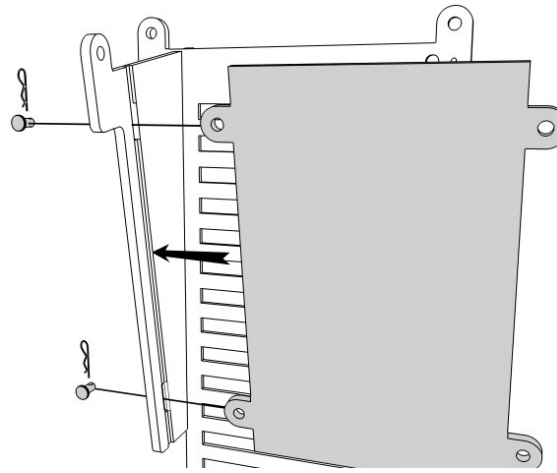
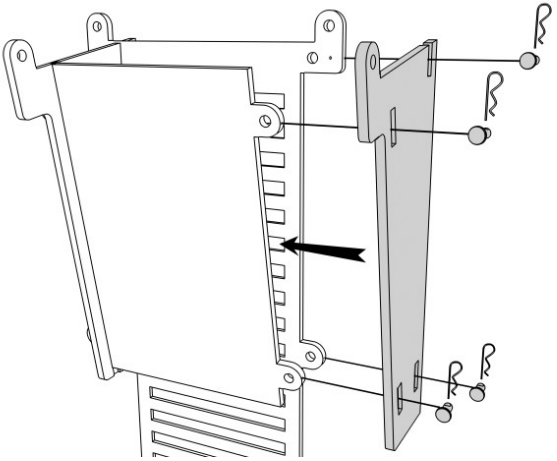
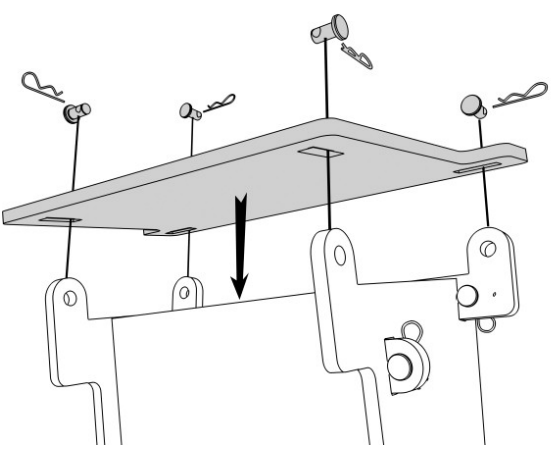
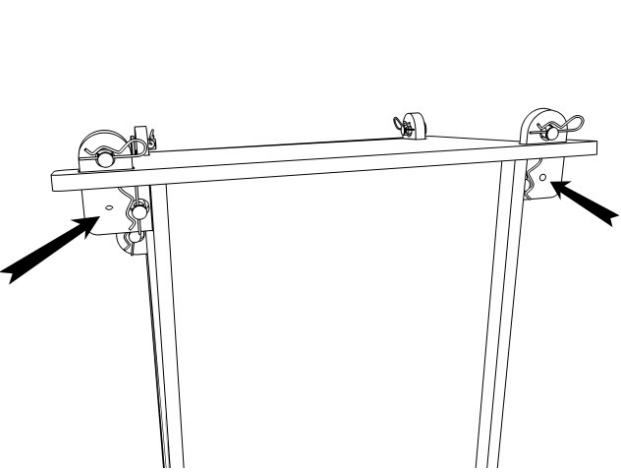
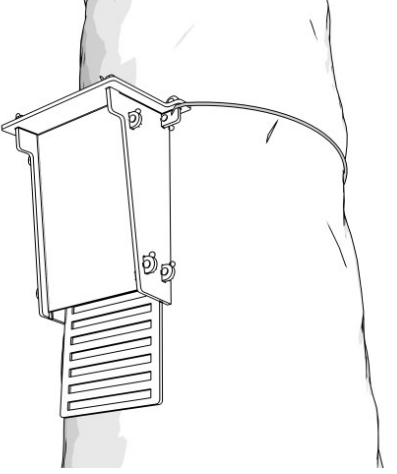
If any parts are missing, please email sales@greenfrogdesigns.co.uk

Please state the part number, quantity missing, your phone number and your full postal address.

SPARE PARTS

Spare parts are available to order online via our website: www.greenfrogdesigns.co.uk

HOW TO ASSEMBLE

	
<p>1 Fit one Side Panel onto the Back Panel with grooves innermost on both. Secure in place using 2 Clevis Pins and R-Clips (see above).</p>	<p>2 Slide the Front Panel into the groove on the Side Panel and secure with Clevis Pins and R-Clips. Ensure that the front panel is the right way up – it should be flush with the top of the side panel.</p>
	
<p>3 Slide the second Side Panel into place with the groove innermost. Secure to the Front and Back Panels using 4 Clevis Pins and R-Clips.</p>	<p>4 Slide the Roof into place and secure with (yes, you guessed!) 4 Clevis Pins and R-Clips.</p>
	
<p>5 The upper rear lugs have two small holes that can be used to secure the bat box to a tree, post, wall etc. using screws.</p>	<p>6 Alternatively, you can use rot-proof string to tie the box to a tree or post.</p>

BATS AND BAT BOX INFORMATION

Bat boxes are important for conservation and research. This bat box is specially designed for use by bats, both for roosting and for raising their young.

A bat box provides an artificial roosting site for bats and, if you are lucky, a maternity colony may raise young in it. It may be used throughout the year, other than very cold periods

The box can be put in your own back garden, or an area with few natural roost sites such as a conifer plantation. It should be south-facing, sheltered and at least 5m above ground, either on a tree or under the eaves of the house. Ideally, it should be exposed to the sun for several hours every day. There should be no overhanging branches or other obstruction that might obstruct the bats flight path. Some authorities recommend placing several boxes near to one another, such as on three sides of a tree, since bats often move from roost to roost depending upon the prevailing weather.

You can tell if a box is occupied by watching carefully at dusk to see whether bats are flying to and from it – but it may take some months before one is actually used by bats. Another tell tale sign of use is the presence of tiny black droppings underneath it. With this design of bat box, you may also be able to shine a torch upwards through the slit and see them roosting.

IMPORTANT NOTE

In the UK, bats and their roosts are protected by the Wildlife and Countryside Act 1981, and it is an offence for anyone without a licence to disturb, handle or kill bats.

If you intend to remove your bat box for relocation etc., please ensure that it is not in use by visually checking it during the day, when any resident bats would be sleeping in it.